

You Are Not Alone. We'll Be Your Navigator.

We are Navigators. We will partner with you and your 'ohana to support you through hard times.



We will connect you and your 'ohana to community resources and services.

We can connect families who need help.

There is no limit for how long we can help you and your 'ohana. We will let you lead.



"Programs like these being navigated by the right hearts are a huge blessing to 'ohana that needs the assistance and may not know how to ask. With a grateful heart, Thank you!!"

- Participant

85% of families felt they were able to access the resources they needed to keep their families stable.

NEED KŌKUA? CONTACT THE NAVIGATOR

(808) 867-9148

(808) 242-0900 x241

navigator@mfss.org

NAVIGATION SERVICES
FOR CHILDREN & FAMILIES
ON MAUI, LĀNA'I, MOLOKA'I



CONCRETE SUPPORT IN TIMES OF NEED

NO SHAME When You Need Kōkua, Reach Out

We need help paying rent!

How do we find childcare?

Can we get SNAP?

How do we apply?



PREVENTING ABUSE & NEGLECT

Ho'oikaika Partnership is a hui that welcomes community members who are devoted to ensuring our keiki and youth grow up healthy, safe and supported. This brochure was made possible through funding from the Hawaii Department of Health - Maui Health District Office.



NAVIGATION SERVICES
FOR CHILDREN & FAMILIES
ON MAUI, LĀNA'I, MOLOKA'I

www.HooikaikaPartnership.com

What are Navigation Services?

Helping you find free services in the community that meet your needs.

How to Access Food

Access to Childcare

Child Needs or Services

Prenatal

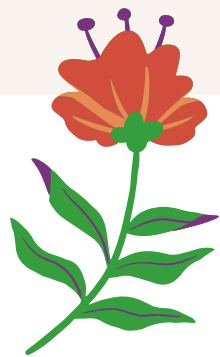
Healthcare & Mental Health Services

Substance Abuse Treatment

Aftercare Coaching

Access to Utility Assistance

Vital Documents



"I think the best way to describe my experience was almost like talking to a relative. I felt she is a very empathetic and relatable caseworker. I felt like she was speaking to me on my level and not above me."

-Participant

FAMILY STRENGTHENING

- Parenting and life skills coaching
- Aftercare coaching to help heal from trauma
- Child abuse & neglect prevention
- No time limit to services

90% of participants reported that they felt comfortable talking to the Navigator about their families' needs.

"This support came at a critical time. I find a lot of assistance doesn't help until you're already in crisis and I was so relieved to be able to avoid that."

-Participant

86% of participants reported that the items they received helped their family stay out of crisis.



PROTECTIVE FACTORS

Protective factors help 'ohana feel nurtured, stay informed, build social connections, maintain resilience, and access resources when needed.

- ✓ *Mālama 'Ohana*
Nurturing and Attachment
- ✓ *Parenting Can Be Hard, But Can*
Knowledge of Parenting and Child Development
- ✓ *Show Keiki Aloha*
Social and Emotional Competence in Children
- ✓ *How You Stay*
Social Connections
- ✓ *First, Make Yourself Pono*
Parental Resilience
- ✓ *No Shame*
Concrete Support in Times of Need